



Collection 2024  
Automne Hiver

 **Comfort**





**YAKS LIVE ON THE HIGH TIBETAN PLATEAU OF THE HIMALAYAS AT AN ALTITUDE OF 4000M.**

**THE YAK IS ONE OF THE FEW ANIMALS CAPABLE OF SURVIVING ON THIS BARREN ENVIRONMENT. YAKS ARE HARDY ANIMALS AND THEIR LEATHER IS TRADITIONALLY USED IN SHOE MANUFACTURING IN TIBET.**

**DUE TO THE ABILITY OF THE YAK TO SURVIVE IN SEVERE CONDITIONS (COLD, WIND, SNOW), THE UNIQUE FEATURES AND BENEFITS OF YAK LEATHER ARE:**

- 1. LIGHTWEIGHT**
- 2. WATER-REPELLENT**
- 3. BREATHABLE**
- 4. SOFT, SUPPLE AND DURABLE**







**G Comfort**

*the Lambskin Specialist*



**Genuine lambskin boots keeps you warm even in freezing temperatures without making the foot sweat.**

**Since real lambskin can absorb up to 30 percent moisture without you feeling damp or cold, the water vapor produced by body heat can be absorbed by the material and released again when the shoes are ventilated, without the foot sweating**



# **G Comfort**

*Energy Fitness Outsole*

**excellent good cushioning  
due to high-tech PUR foam  
in the midsoles**

**"full grain" natural leather**



**Anatomical removable insoles,  
suitable for customized orthotics**

***The G Comfort Energy Fitness Soles were designed based on the principles of running shoes. The key feature of these shoes is the soft and springy high-tech midsole made of open-pore PUR foam. This midsole is able to adapt to the contours of the foot, evenly distributing pressure and providing both support and stability. Additionally, it offers exceptional cushioning properties.***

***These characteristics contribute to the G Comfort shoes providing excellent shock absorption. As a result, they help relieve stress on the back and joints, which can help prevent back and joint pain. Furthermore, they promote an active walking experience.***

***The G Comfort shoes are particularly well-suited for professions that involve standing and walking for extended periods on a daily basis, such as those in the catering, retail, or service industries. With these shoes, tired feet and joint pain after work will become a thing of the past!***





# Comfort

*The Business Running Shoe*

*Elegant und Bequem wie ein echter Laufschuh  
Elegant and Comfortable like a Running Shoe!*



**Gestrobelter Schuh-schaft  
strobel shoe construction**

**Offenzelliger PUR Schaum  
open cells PUR foam**

**TPU Aussenschale  
TPU outsole**

**Besonders gute Dämpfung durch High-Tech PUR Schaum im Sohlenkern  
Schont Gelenke, entlastet den Rücken**

**excellent shock absorption due to high-tech PUR foam  
effective against tired feet, joint pain and back pain**





 **TEX**  
Membranen  
Ausstattung

**WIDE FIT**



**R-5583**  
36-42  
LZ M8 2024

**S = SCHWARZ - BLACK BRUSH CALF**

**R = MEDOC BURGUNDY BRUSH CA**

**L = OCEAN - NAVY SOFTNAPPA**



**R-5583**  
36-42  
LZ MS 2024



**CG = COGNAC - COGNAC TAN COMBO**    **SN = SCHWARZ - BLACK SOFTNAPPA / NUBUCK**    **TG = TAUPE - TAUPE SOFTNAPPA / GREY NUBUCK**



**F = FUCHSIA - FUCHSIA SOFT NUBUCK**    **G = GRAU - GREY SOFTNUBUCK**    **L = OCEAN - NAVY SOFTNAPPA**



**WIDE  
FIT**



**P-9813**  
37-42  
LZ MS 2024

**S = SCHWARZ - BLACK**



**P-9813**  
37-42  
LZ MS 2024

**R = MEDOC BURGUNDY**



**WIDE  
FIT**



**799-3**  
36-42  
LZ M8 2024



SF = SCHWARZ - BLACK FANTASY

**799-4**  
36-42  
LZ M8 2024



ST = SCHWARZ - BLACK STRETCH    S = SCHWARZ - BLACK SOFTNAPPA



EXTRA WIDE  
**Fit**



**P-8262**  
36-42  
LZ M8 2024



S = SCHWARZ - BLACK FANTASY    L = BLUE METALLIC FANTASY

**P-8262**  
36-42  
LZ M8 2024



SL = OCEAN - NAVY SOFTNAPPA    S = SCHWARZ - BLACK SOFTNAPPA



EXTRA WIDE  
**Fit**





**P-8261**  
36-42  
LZ MS 2024



SN = SCHWARZ - BLACK SOFTNAPPA FANTASY

ZF = ZINN - TIN FANTASY

SF = SCHWARZ - BLACK FANTASY

L = BLUE METALLIC FANTASY



EXTRA WIDE  
**Fit**



**P-9513**  
36-42  
LZ MS 2023



S = SCHWARZ - BLACK SOFTNAPPA

R = MEDOC BURGUNDY SOFTNAPPA



WIDE  
**Fit**







**P-9520**  
36-42  
LZ M8 2024



**P-9520**  
36-42  
LZ M8 2024

*Stretch*

**STN = SCHWARZ - BLACK STRETCH NUBUCK**

**S = SCHWARZ - BLACK SOFTNAPPA    R = MEDOC BURGUNDY SOFTNAPPA**



**P-9519**  
36-42  
LZ M8 2024



**P-9519**  
36-42  
LZ M8 2024



**P-9519**  
36-42  
LZ M8 2024

*Stretch*

**S = SCHWARZ - BLACK    R = MEDOC BURGUNDY SOFTNAPPA    ST = SCHWARZ - BLACK STRETCH NUBUCK**



**WIDE  
FIT**







**YAK**  
LEATHER  
**HIMALAYA**



SL=Schwarz - Black Fantasy



RY= MEDOC BURGUNDY YAK

**5188-17**  
36-42  
LZ M8 2024



SL = Schwarz - Black Fantasy

**5188-2**  
36-42  
LZ M8 2024



**YAK**  
LEATHER  
**HIMALAYA**



**Wide  
Fit**







**798-5**  
**36-42**  
**LZ MS 2024**



**S= SCHWARZ – BLACK SOFTNAPPA**

**R = MEDOC BURGUNDY SOFTNAPPA**



**WIDE  
FIT**







TEX  
membrane  
material



**P-9521**  
36-42  
LZ M8 2024



**R = MEDOC BURGUNDY YAK**

**S = SCHWARZ – BLACK YAK**

**C = COGNAC – TAN YAK**

**P-9521**  
36-42  
LZ M8 2024



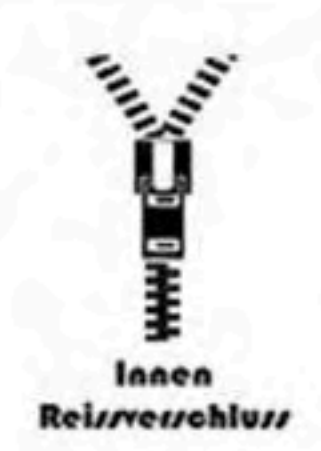
**GY = GRAU - GREY YAK LEATHER**

**LY = OCEAN - OCEAN YAK LEATHER**

**M = BORDEAUX - MULBERRY YAK NUBUCK**



**WIDE  
FIT**







**GN = GRAU - GREY OIL NUBUCK**



**LN = OCEAN - NAVY OIL NUBUCK**



**YN = GELB - YELLOW OIL NUBUCK**

**979-18**  
36-42  
LZ MS 2024



**S = SCHWARZ- BACK YAK**



**R = MEDOC BURGUNDY YAK**



**BN = BRAUN - BROWN OIL NUBUCK**

**979-18**  
36-42  
LZ MS 2024



**WIDE  
FIT**







**R-5586**  
36-42  
LZ M9 2024

**R = Rot - Red**



**R-5586**  
36-42  
LZ M9 2024

**L = NAVY - OCEAN**



**R-5586**  
36-42  
LZ M9 2024

**G = GREY - GRAU**



**R-5586**  
36-42  
LZ M9 2024

**P = BEIGE**



**R-5586**  
36-42  
LZ M9 2024

**S = SCHWARZ - BLACK**

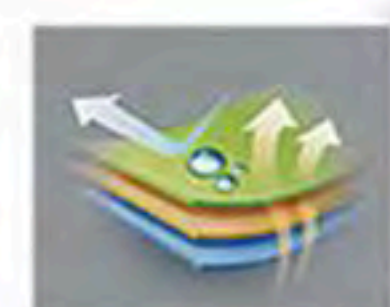


**R-5594**  
36-42  
LZ M9 2024

**S = SCHWARZ - BLACK**



**WIDE  
FIT**



**TEX  
membrane  
material**





**G Comfort**  
*Men's Shoes*







**R-1282**  
40-46  
LZ MS 2024

**0= SCHWARZ - BLACK**

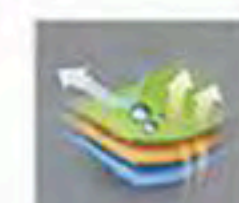


**R-1282**  
40-46  
LZ MS 2024

**1= COGNAC - TAN**



**WIDE  
FIT**



TEX  
membrane  
material



Innen  
Reißverschluss



**A-913**  
40-46  
LZ MS 2024



**C = COGNAC - TAN**



**S = SCHWARZ - BLACK**



**WIDE  
FIT**

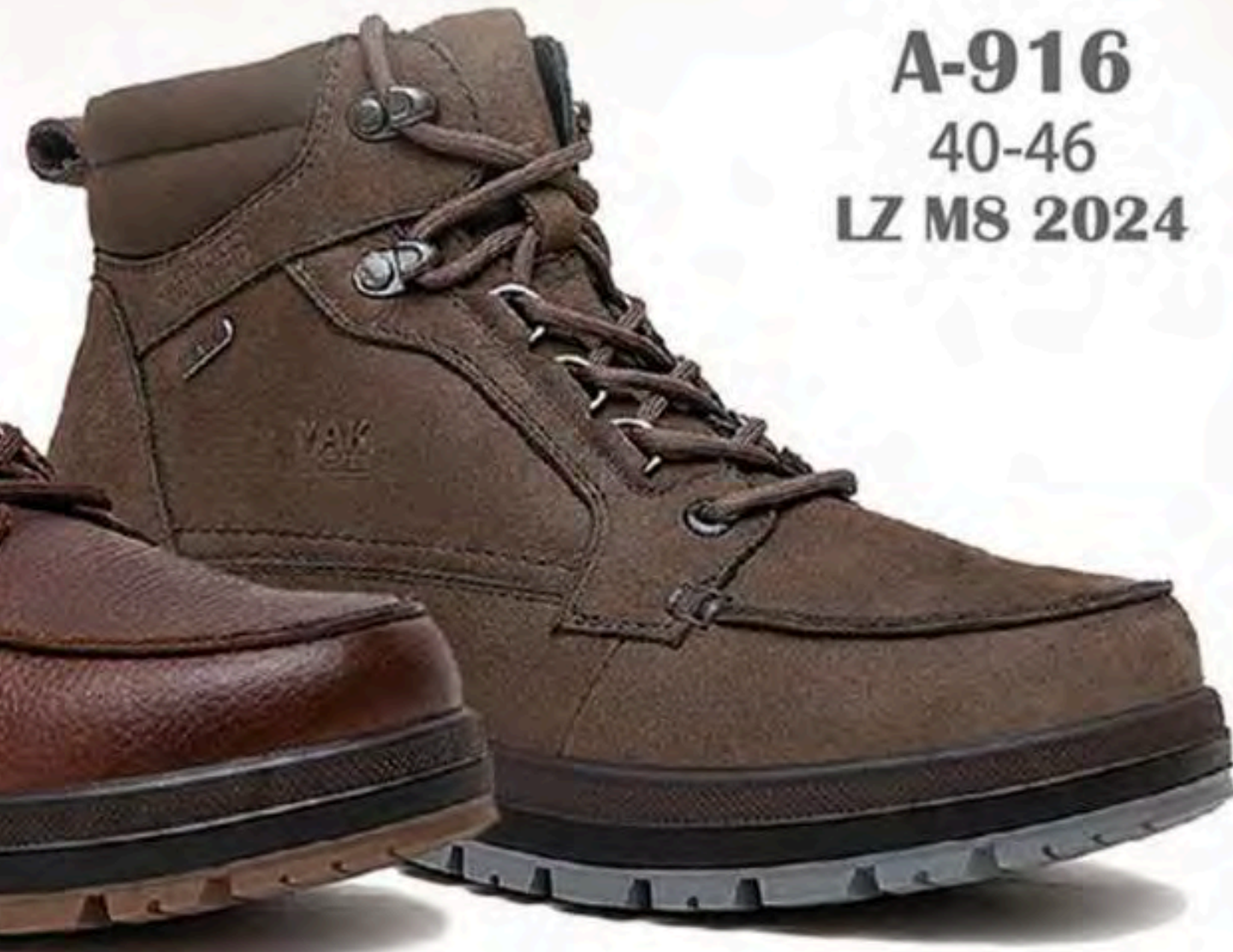
**TREKKING**



**S= SCHWARZ - BLACK YAK**



**BP = BRAUN - BROWN PULLUP YAK**

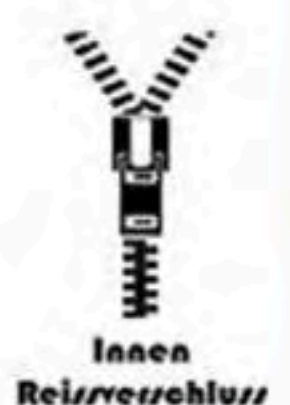


**G = SCHLAMM - COFFEE YAK**

**A-916**  
40-46  
LZ MS 2024



**WIDE  
FIT**







**919-2**  
40-46  
LZ MS 2024

SN = SCHWARZ - BLACK SOFTNAPPA



**919-2**  
40-46  
LZ MS 2024

CF = COGNAC - TAN SOFTNAPPA



**WIDE  
FIT**







**A-7825**  
40-46 47-48 +4  
LZ M8 2024



**G = SCHLamm - COFFEE**

**S = SCHWARZ - BLACK**

**C = COGNAC - TAN**



**WIDE  
FIT**



**A-902**  
40-46 47-48 +4  
LZ MS 2024



**S = SCHWARZ - BLACK**

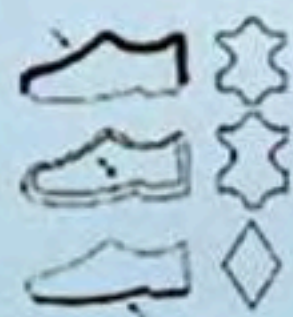
**C = COGNAC - TAN**

**A-905**  
40-46 47-48 +4  
LZ MS 2024



**C = COGNAC - TAN**

**S = SCHWARZ - BLACK**



**WIDE  
FIT**







**G**  
**Comfort**



**S = SCHWARZ - BLACK**

**A-903**  
40-46 47-48+4  
LZ M8 2023



**C = COGNAC - TAN**



**WIDE  
FIT**



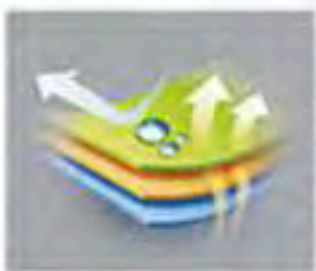




**A-816**  
40-46  
LZ M9 2024

**B = Braun - Brown**

**S = Schwarz - Black**



**TEX  
Membranen  
Ausstattung**



**Genuine  
Lambskin  
Lining**



**Innen  
Reißverschluss**



**HD herausnehm.  
Fussbett**



**WIDE  
FIT**

**A-7823**  
40-46 47-48 +4  
LZ M8 2024



**C = COGNAC - TAN**

**S = SCHWARZ - BLACK**



**HD Removable  
Insoles**

**WIDE  
FIT**



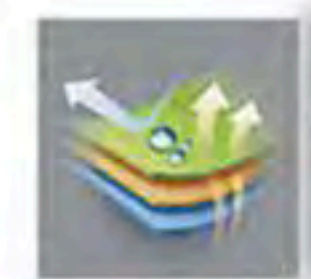
**TEX  
membrane  
material**





## COMFORT AND WIDE-FITTING

**P-3708**  
40-46 47-48 +4  
LZ M8 2023



TEX  
membrane  
material



**C = COGNAC – TAN DEER LEATHER**

**B = BRAUN – BROWN DEER LEATHER**

**S = SCHWARZ – BLACK DEER LEATHER**

**EXTRA WIDE FITTING**





**DARDO**  
ORTHOPÉDIQUE  
ORTHOPEDIC

837 chemin de la 4e ligne,  
St-Valentin, QC J0J 2E0  
(514) 337-1184 / Fax: (514) 337-0913  
valerie@dardo.ca  
www.dardo.ca